



***Welcome to our  
roundtable series.  
We're glad you're here.***



# Our Work Together

JoAnne Reifsnyder PhD, MSN, MBA, RN, FAAN  
Professor, Health Services Leadership and Management  
University of Maryland School of Nursing  
Former Chief Nursing Officer, Genesis HealthCare



# AFHS 4 “M’s” Applied to the *Careforce*

- What **M**atters (facility culture, respect, a voice),
- **M**edication (health promotion & workplace safety),
- **M**entation (wellbeing of staff with a focus on stress management and compassionate self-care), and
- **M**obility (opportunities for personal growth and career advancement with ongoing education)

Last year’s roundtables are archived at  
[www.paltc.org/goodthing](http://www.paltc.org/goodthing)

# This Year's Focus....Leadership & Culture

- The role of leadership in staff retention and recruitment
  - How can medical directors have an impact on facility culture?
  - How can medical directors, administrators, directors of nursing and others in leadership work together to develop sustain a positive work culture?
- Live leadership modules to kick off in January 2024 with practical, evidence-based “try this” approaches that can help you improve your leadership style

# To Level Set....

- We are a community focused on co-design
- “All teach, all learn”<sup>1</sup>
- Small tests of change
- Collation and dissemination of insights



# Your Role as Leader

## *Revisiting the Teaching Nursing Home: Phases I & II*



October 12, 2023



Nancy B. Zions, MBA, Chief Program Officer, Chief Operations Officer, Jewish  
Healthcare Foundation



# The Proposal in 2021

... implement a contemporary version of the Teaching Nursing Home model in three regions of Pennsylvania to **demonstrate how enhanced partnerships between academic nursing schools and nursing homes can improve quality and cost outcomes.**

Drawing upon existing resources from the **Age-Friendly Health Systems initiative** while **integrating lessons learned and partnerships created through the COVID-19 pandemic** and the original Teaching Nursing Home model from the 1980s.

# Revisiting the Teaching Nursing Home: Pilot Project Aims (2021-2023)

Improve  
resident  
outcomes

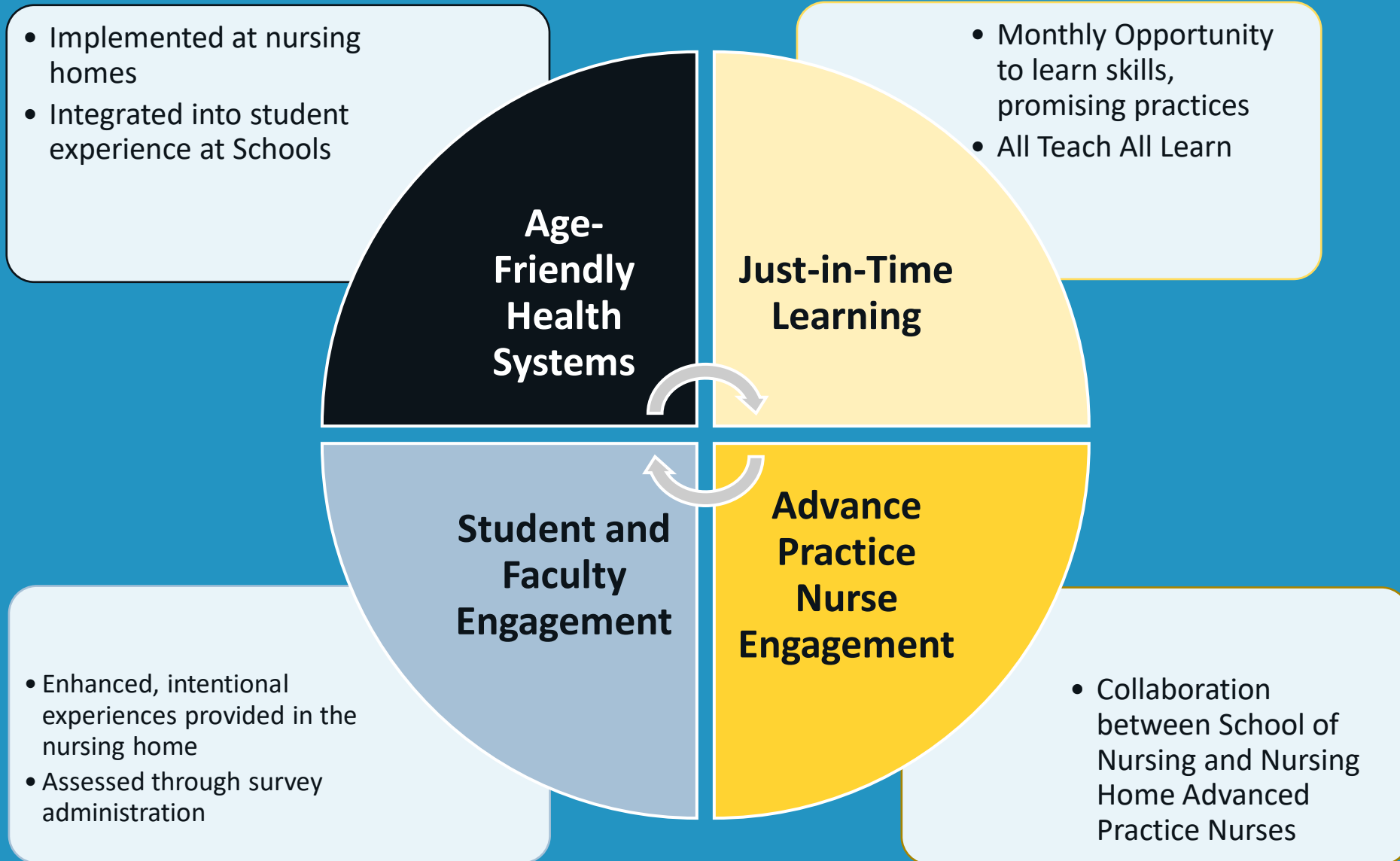
Enrich clinical  
skills of  
nursing home  
staff, promote  
retention

Enhance  
faculty and  
student  
knowledge of  
nursing home  
care

Track  
organizational  
and regulatory  
barriers and  
practices



# Intervention Components



# My Epiphany Half-Way Through Phase I:

Sure, Academic Institutions and Hospitals have a lot to offer nursing homes.

But it can and should work both ways...



# Programmatic Lessons Learned



## Age-Friendly Health Systems as Unifying Principles

AFHS provides staff and students with a goal-oriented framework for resident care



## Faculty Orientation

Orienting Faculty to the nursing home setting is instrumental in ensuring students have positive experiences during their clinicals



## Planning for Clinical Placement

Clear plans for student time in the nursing home allow nursing home staff to better support students and contribute to their experiences

# Road to 100, Phase II: Teaching Nursing Home Collaborative

There are more than **600 nursing homes** and more than **40 schools of nursing** across Pennsylvania. ***Our goal is to reach them ALL and to engage at least five other states in this work between 2023 and 2026.***

***Collaborative members will share the same goals:***

- ***improve the clinical outcomes for nursing home residents,***
- ***enrich nursing education, and***
- ***support the Careforce***



# Why Join this Collaborative?



Our shared goal is to improve resident care and help older adults ...

We must support the retention and recruitment of the careforce in nursing homes.

**You can become champions to encourage and support this work**

# Opportunities To Take the Next Step

## Working Roundtable Co-Design Meetings

**Occurrence:** Monthly

**Led by:** JHF

**Attendance:** All Phase I, community, strategic and government partners

**Content:** Strategy, dissemination, planning, advocacy, taskforces work

## Learning Series: Sessions 1-4

**Occurrence:** Four per quarter

**Led by:** Regional Teams from Phase I on rotating schedule

**Attendance:** Open to all interested organizations and states

**Content:** Getting Started, Student Engagement, Careforce support

## National and Statewide Advisory

**Occurrence:** Quarterly

**Led by:** JHF and Advisory Board Chair, Alice Bonner

**Attendance:** Open to all Phase I Partners and Advisors

**Content:** Strategic planning and advice

# Resources for Nursing Homes and Schools



## Getting Started Guide

- Resource for Nursing Homes and Schools of Nursing to orient to the Collaborative and begin exploring resources



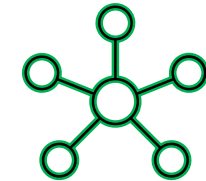
## TNHC Workbook

- Step-by-step guide that follows Learning Series Sessions



## Open Access Website

- One stop shop for resources, materials, and meetings



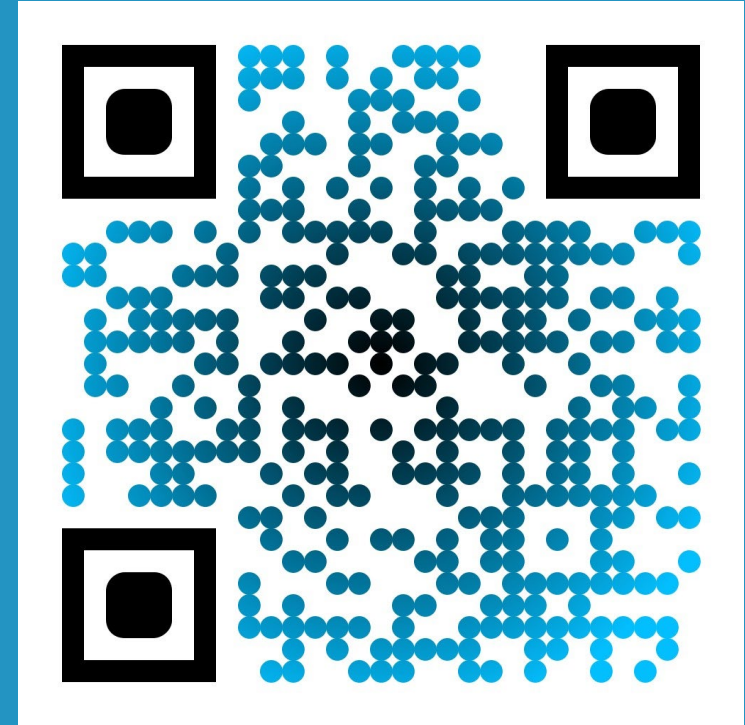
## Matching Tool

- Listing of Organizations who are looking for a partnership, embedded on Website

# How to Learn More and Get Involved

To learn more:  
Visit our website  
[www.patnhc.org](http://www.patnhc.org)

To get involved:  
Email [info@patnhc.org](mailto:info@patnhc.org)



*Scan here to visit our  
website*



**Questions or  
Comments**

